



HOW TO CONFIGURE ALLOYVOICE FAXING ON GRANDSTREAM HT8XX ATA

1. Introduction

This Technical note will go through information on how to setup AlloyVoice on Grandstream HT8xx ATA

SIP trunks are a VoIP service that can be provided from an ITSP (Internet Telephony Service Provider) to extend telephony features beyond IP-PBX local area. SIP trunks can carry voice calls, video calls, multimedia conferences, faxing and other SIP-based, real-time communications services

TECHNICAL NOTE

Author: Sas Brandy

Date: July 18th, 2019



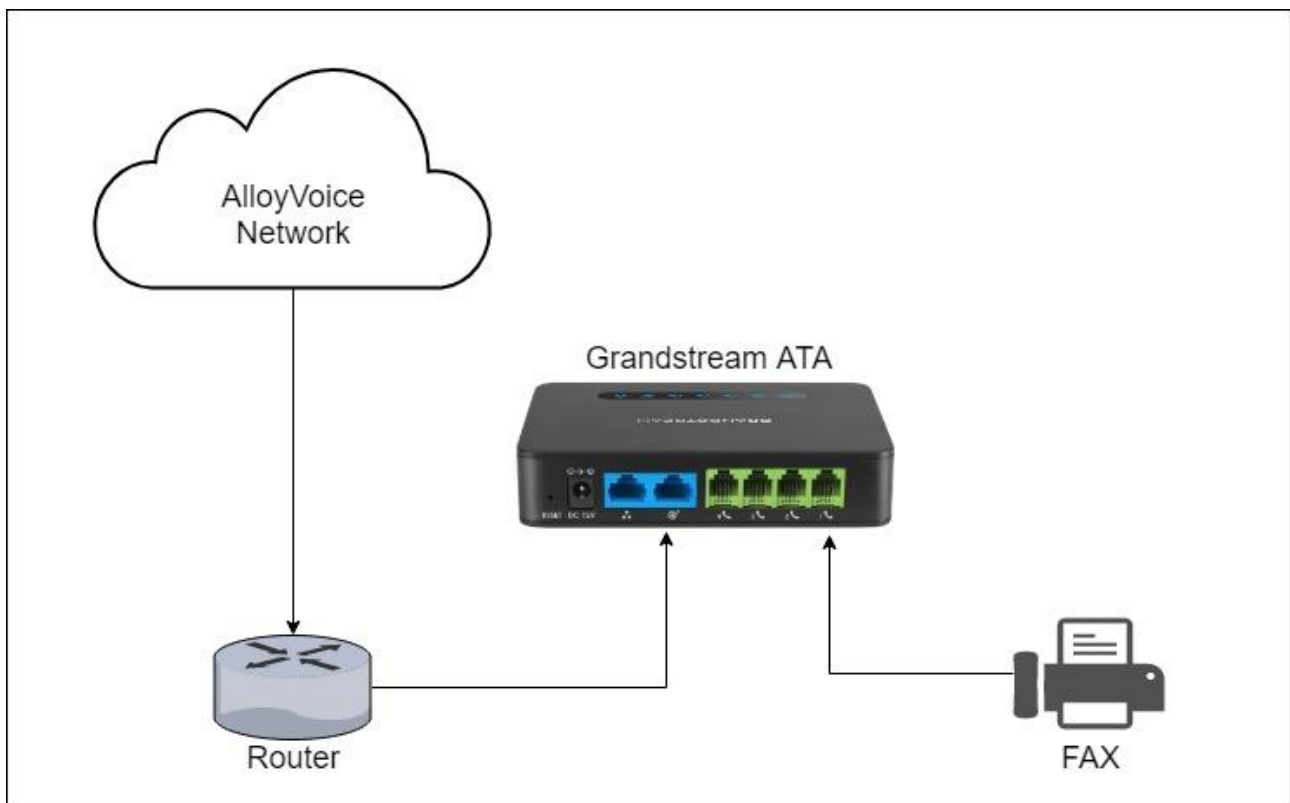
Contents

1. Introduction.....	1
2. Connecting Grandstream ATA.....	3
3. Logging into the Web Console.....	4
4. Configure SIP Trunk.....	5
5. Configure FAX Settings.....	7
6. SIP Trunk Status.....	8

2. Connecting Grandstream ATA

Use the following steps when connecting the Grandstream ATA to the network

1. Insert a standard RJ11 telephone cable into the phone ports and connect the other end of the cable to the FAX machine
2. Connect the WAN Port of the HT814 to the network. It will act as a DHCP client and obtain an IP address from the DHCP Server



TECHNICAL NOTE

Author: Sas Brandy

Date: July 18th, 2019

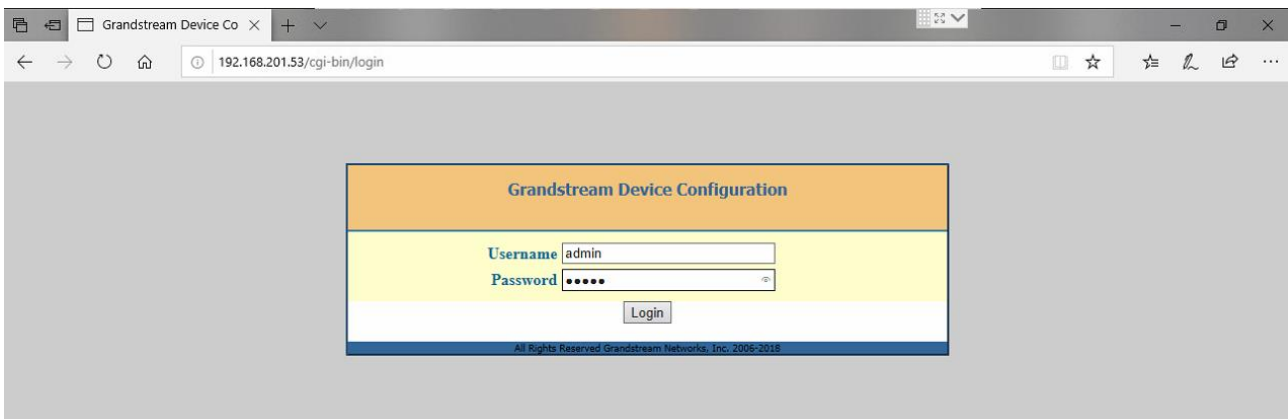


3. Logging into the Web Console

Please refer to the steps below to find the IP address if HT8xx:

1. Use a telephone/fax machine connected to phone ports of your HT8xx.
2. Press *** (press the star key three times) to access the IVR menu and wait until you hear “Enter the menu option “.
3. Press 02 and the current IP address will be announced.
4. Enter the IP address into your browser to logging into the web console

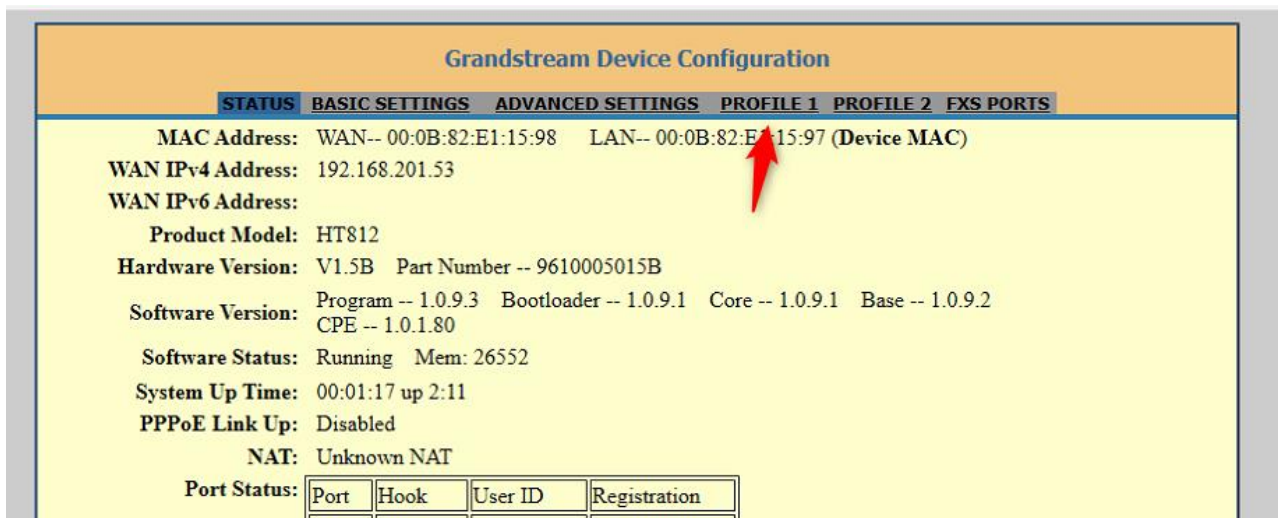
Default username and password is “admin”



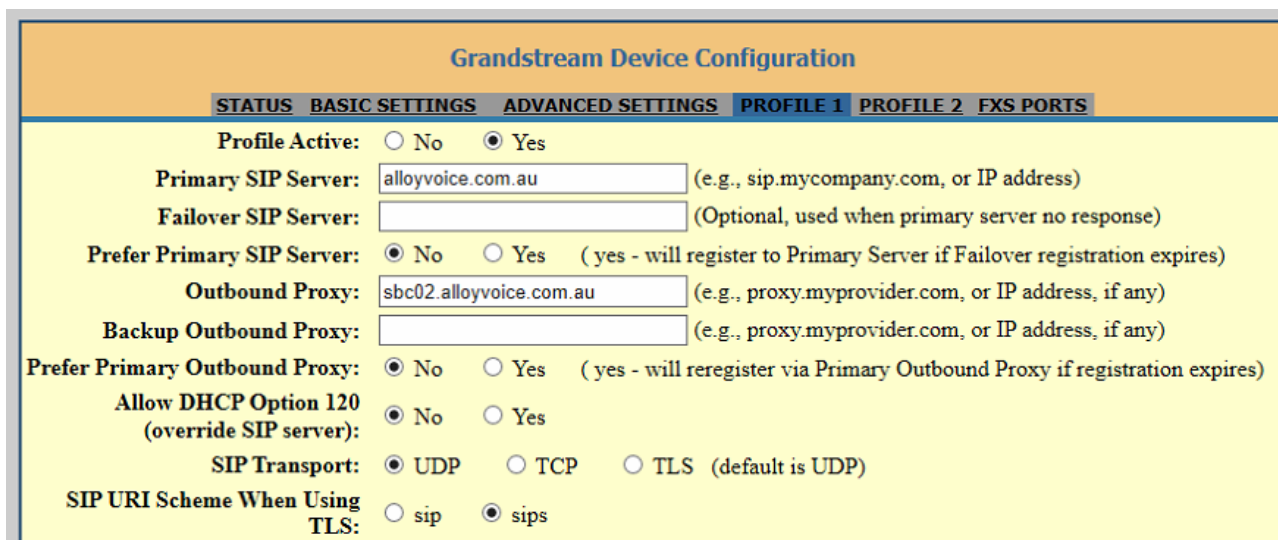


4. Configure SIP Trunk

In this section we discuss the configuration of the Alloy Voice SIP VoIP Trunk through the Grandstream web console



- Click the **Profile 1** menu from the top navigation bar
- Enter AlloyVoice SIP Server Details
Primary SIP Server -> **alloyvoice.com.au**
Outbound Proxy -> **sbc02.alloyvoice.com.au**
- Click **Apply**



TECHNICAL NOTE

Author: Sas Brandy

Date: July 18th, 2019



Please follow following steps to configure authentication details of the AlloyVoice SIP Trunk

- Click the **FXS Ports** menu from the top navigation bar
- Enter AlloyVoice enter Alloy Voice authentication details
SIP User ID -> **SIP Trunk ID**
Authenticate ID -> **SIP Trunk ID**
Password -> **SIP Trunk Password**
- Click **Apply**

The screenshot shows the 'Grandstream Device Configuration' interface with the 'FXS PORTS' tab selected. The 'User Settings' section contains a table for configuring two ports. The first port is configured with SIP User ID '038', Authenticate ID '038', and Password '*****'. The 'Enable Port' column has radio buttons for 'No' and 'Yes', with 'Yes' selected. Below the table, there are input fields for 'Offhook' and 'Auto-dial' for both ports. At the bottom, there are buttons for 'Update', 'Apply', 'Cancel', and 'Reboot'. A footer note reads 'All Rights Reserved Grandstream Networks, Inc. 2006-2018'.

Port	SIP User ID	Authenticate ID	Password	Name	Profile ID	Hunting Group	Request URI	Routing ID	Enable Port
1	038	038	*****		Profile 1	None			<input type="radio"/> No <input checked="" type="radio"/> Yes
2					Profile 1	None			<input type="radio"/> No <input checked="" type="radio"/> Yes

Port Offhook Auto-dial

1

2

All Rights Reserved Grandstream Networks, Inc. 2006-2018



5. Configure FAX Settings

Please follow following steps to configure FAX specific settings to Grandstream HT8xx ATA

- Click the **Profile 1** menu from the top navigation bar
- Enter following FAX settings
 - NAT Traversal -> **Keep-Alive**
 - Use First Matching Vocoder in 2000 -> **Yes**
 - Fax Mode -> **T.38**
 - Re-INVITE After Fax Tone Detected -> **Yes**
 - Disable Call-Waiting -> **Yes**
 - Disable Call-Waiting Caller ID -> **Yes**
 - Disable Call-Waiting Tone -> **Yes**
 - Allow Incoming SIP Messages from SIP Proxy Only -> **Yes**

6. SIP Trunk Status

To view the status of the SIP Trunk please click **Status** menu from the top navigation bar.

Grandstream Device Configuration

STATUS BASIC SETTINGS ADVANCED SETTINGS PROFILE 1 PROFILE 2 FXS PORTS

MAC Address: WAN-- 00:0B:82:E1:15:98 LAN-- 00:0B:82:E1:15:97 (Device MAC)
WAN IPv4 Address: 192.168.201.53
WAN IPv6 Address:
Product Model: HT812
Hardware Version: V1.5B Part Number -- 9610005015B
Software Version: Program -- 1.0.9.3 Bootloader -- 1.0.9.1 Core -- 1.0.9.1 Base -- 1.0.9.2
CPE -- 1.0.1.80
Software Status: Running Mem: 26552
System Up Time: 00:24:23 up 2:34
PPPoE Link Up: Disabled
NAT: Unknown NAT

Port Status:

Port	Hook	User ID	Registration
FXS 1	On Hook	03	Registered
FXS 2	Off Hook		Not Registered

Port Options:

Port	DND	Forward	Busy Forward	Delayed Forward
FXS 1	No			
FXS 2	No			

Provision: Not running. Last status : Downloading file from url.
Core Dump: Clean

All Rights Reserved Grandstream Networks, Inc. 2006-2018